

Certificate of Analysis

Product Name: [Met] - beta - Amyloid (1 - 42), 5 - TAMRA labeled, Human

Sequence: 5-TAMRA-MDAEFRHDSGYEVHHQKLVFFAEDVGSNKGAIIGLMVGGVVIA

Sequence(Three Letters Code): 5-TAMRA-Met-Asp-Ala-Glu-Phe-Arg-His-Asp-Ser-Gly-Tyr-Glu-Val-His-His-Gln-Lys-Leu-Val-Phe-Phe-Ala-Glu-Asp-Val-Gly-Ser-Asn-Lys-Gly-Ala-Ile-Ile-Gly-Leu-Met-Val-Gly-Gly-Val-Val-Ile-Ala

Purity: 96.20%

Molecular Weight: 5057.79

Solubility: 1mg/ml in 33%ACN/67%H₂O

Test	Specification	Result
Purity:	HPLC (See attached RP-HPLC chromatogram)	Conforms
MS Analysis:	ESI-MS (See attached MS spectrum)	Conforms
Counter Ion:	Trifluoroacetate	Conforms
Appearance:	Lyophilized powder or Crystallization	Conforms

Quality Assurance By: _____ **Position:** Manager **Date:** 2020-04-09

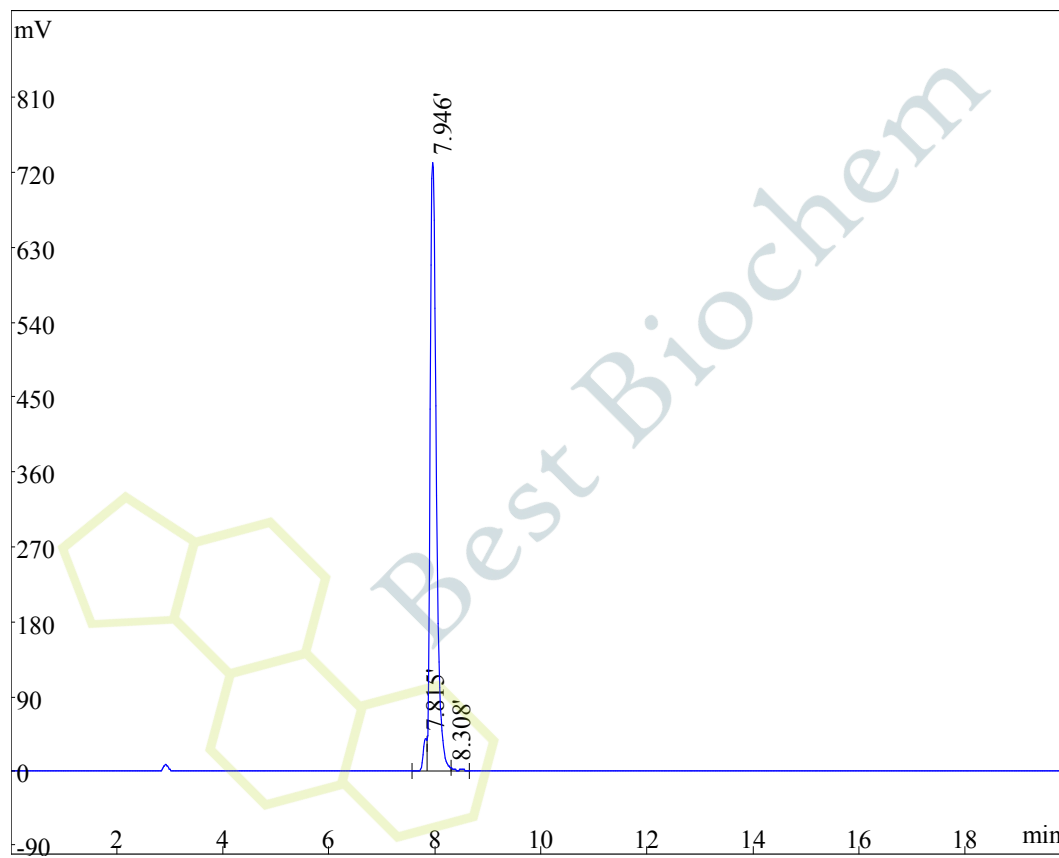
Important: The peptides can be used for research only. Most of the peptides are lyophilized white or faint yellow powder while fluorescent modified ones have special colors. The state of peptides with strong hydrophilic properties may be crystalline or liquid which does not affect for use. Before experiment, please choose proper solvent for your experiment to dissolve peptides. If peptides cannot be dissolved under harsh conditions, we can carry out feasibility study. Storage conditions: -20°C, seal, avoid light, dry.

Please test the sample within two weeks after receiving it.

注意：本品仅供科研，生产用途，不得直接用于人体。

HPLC Analysis Report

Measurement: Peak Area Run Time: 20min
 Calculation Type: Percent Wavelength : 220nm
 Flow Rate : 1.0ml/min Inj.Vol: 10uL
 Column: Kromasil 100-5C18,4.6mmX250mm,5 micron Column Temp: 30°C
 Buffer A : 0.1%TFA in Acetonitrile Buffer B: 0.1%TFA in water
 Gradient(linear): A B
 0.0min 30% 70%
 20min 80% 20%
 20.1min 100% 0%



Rank	Time	Name	Conc.	Area
1	7.815		3.274	181307
2	7.946		96.2	5328284
3	8.308		0.5234	28988
Total			100	5538579

MS Analysis Report

Ion Source: ESI

Capillary(KV):±(2500~3000)

Desolvation(L/hr):800

Desolvation Temp:450°C

Cone(V): 30~50

Run Time: 1min

45015-0327-25 5 (0.134)

Scan ES+
3.13e5

